

Capacity Planning in the Application Driven Economy

Jeremy Rossbach
Richard Gimarc

June 1, 2015



Abstract

The Application Driven Economy is upon us. Businesses today are currently faced with a rapidly growing number of applications that must succeed on the first try to gain competitive edge. Their success is enabled by the supporting IT infrastructure and data center. So how does this affect our job as capacity planners? Is it business as usual, or do we need to revise our approach?

This session will examine the new Application Driven Economy and explore how our job as capacity planners must adapt to the new demand. The good news is that we have the tools and methodologies today to address this challenge, we simply need to change our focus.

Our Speakers



Jeremy Rossbach has spent the last 8 years at CA Technologies in a variety of roles, including Pre Sales Engineer to Product Management and currently supports the CA Capacity Management solution. Prior to CA, he spent 15 years in IT, across public and private sectors, managing data centers for startups, healthcare, financial and federal system integrators. Previous roles as data center administrator, engineer, architect and manager have provided him invaluable insights into the challenges and goals of IT consumers.



Richard Gimarc, CA Technologies, is a member of the capacity management services team at CA Technologies. In that role he works with customers during the planning, design, implementation and institutionalization of the CA Capacity Management Solution.

Richard is a recognized industry expert in capacity planning, performance engineering and performance analysis. Over the years he has developed and applied his performance and capacity planning expertise to a variety of complex, diverse and challenging environments. Richard has authored 30+ papers covering a wide range of performance related topics including application scalability, green capacity planning and cloud performance. He is also a regular speaker at both CMG international and regional conferences.

Capacity Planning in the Application Driven Economy

Global transformation [REF01]

- We are in the midst of a global transformation in the way people consume & interact with information
- The transformation is being fueled by software & mobile devices

Application-driven economy [REF02]

- Customers are no longer loyal to a brand, product or service
- Customers are loyal to the complete experience & that is dependent on the application
- This means that applications must deliver the expected functionality & performance

Requirements to support the Application-Driven economy

- Applications, IT infrastructure and the data center are the bedrock of the application driven economy
 - Applications - driven by business requirements
 - Hardware - driven by application requirements
 - Facilities - driven by hardware requirements

Telling A Story

We are going to talk about a number of ideas and show how they are related

Internet of Things

**Application Driven
Economy**

**Capacity
Planning
Stack**

**Stack
Metrics**

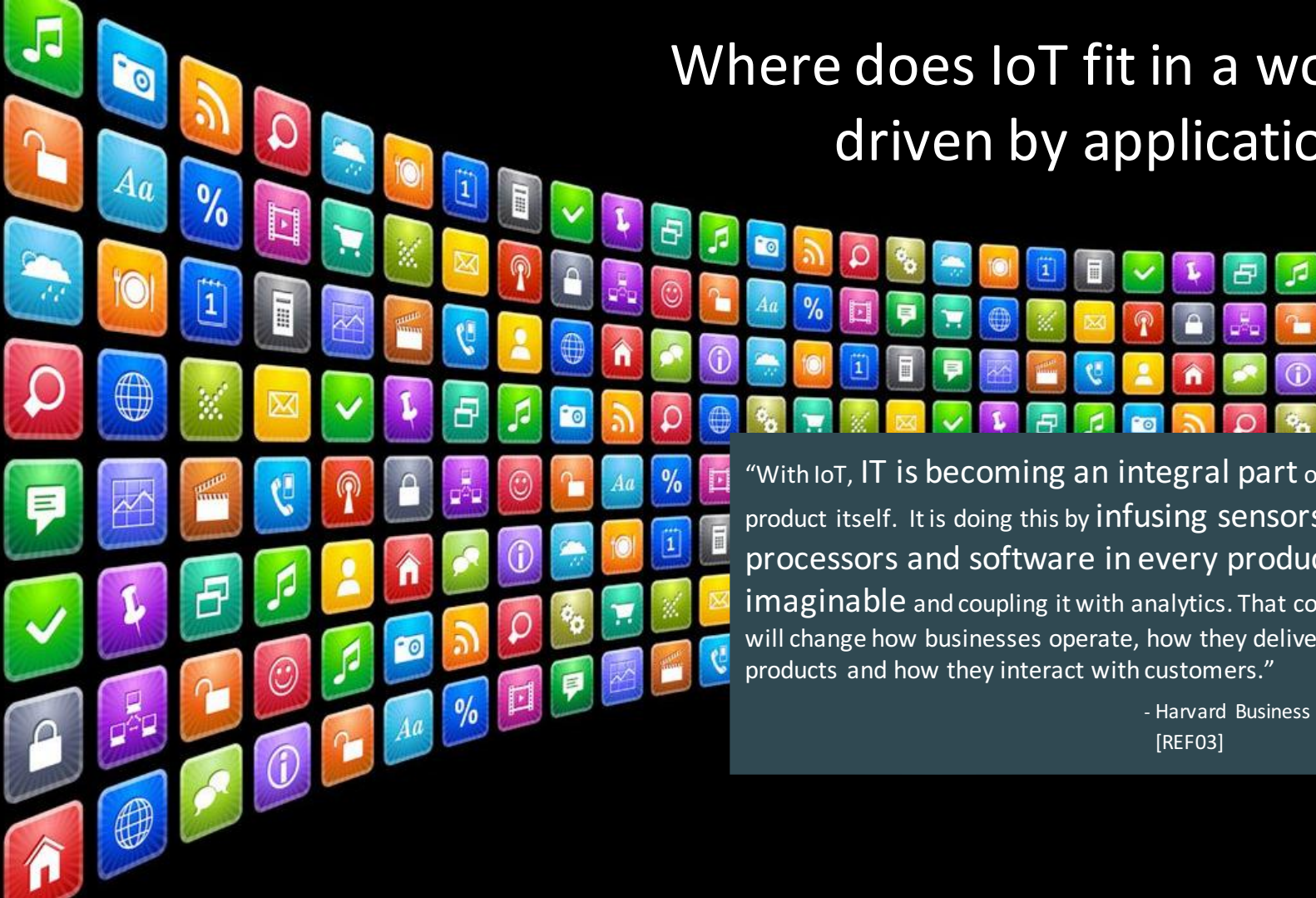
IT Supply Chain

**Application
Capacity Planning**

Poll Question #1

Have you seen an increased emphasis on application-level capacity planning over the past year?

- a) No change – today is the same as it was last year
- b) Some change – people are talking about application capacity planning
- c) Large change – org changes made for app capacity planning



Where does IoT fit in a world driven by applications?

“With IoT, IT is becoming an integral part of the product itself. It is doing this by infusing sensors, processors and software in every product, making it unimaginable and coupling it with analytics. That will change how businesses operate, how they deliver products and how they interact with customers.”

- Harvard Business Review
[REF03]

“With IoT, IT is becoming an integral part of the product itself. It is doing this by infusing sensors, processors and software in every product imaginable and coupling it with analytics. That combination will change how businesses operate, how they deliver their products and how they interact with customers.”

- Harvard Business Review
[REF03]

- Harvard Business Review
[REF03]

IoT is all around us



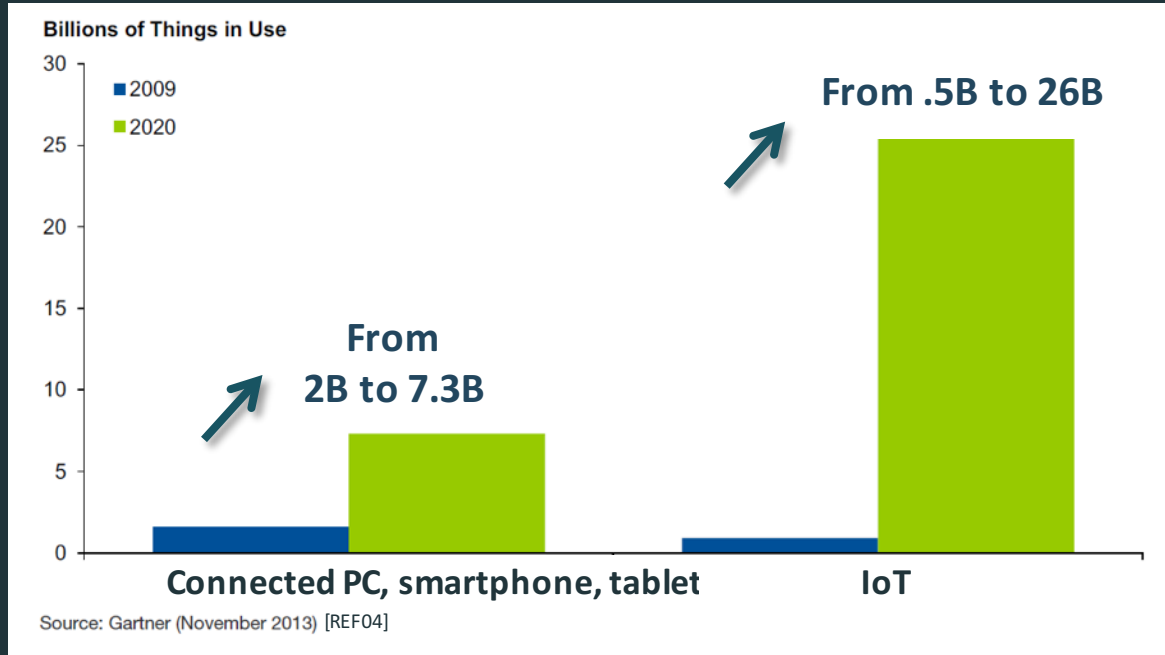
Applications are changing the world of business

...and the web is going away



IoT will be a driver of the Application Economy

The proliferation of connected devices will drive the number of new apps



Application quality & user experience will be impacted

The result of doing nothing...

25%

of users will abandon a web application after just three seconds of delay*

80-90%

of all consumer applications will only be used once

\$500M

cost of trading losses during Facebook IPO due to “system problems”

Sources: Aberdeen Group, *Reaching the Top of the Web Performance Mountain*, May 2013 [REF05]
Digital Trends, *Are you a rarity? Only 16 percent of people will try out an app more than twice*, March 2013 [REF06]
RT.com, *NASDAQ longest downtime adds to woes over glitches in electronic trading*, August 2013 [REF07]

Are You Ready?

Processed in real time will increase workloads and data center investments



Big Data

Storage

Servers

Network

Data Center

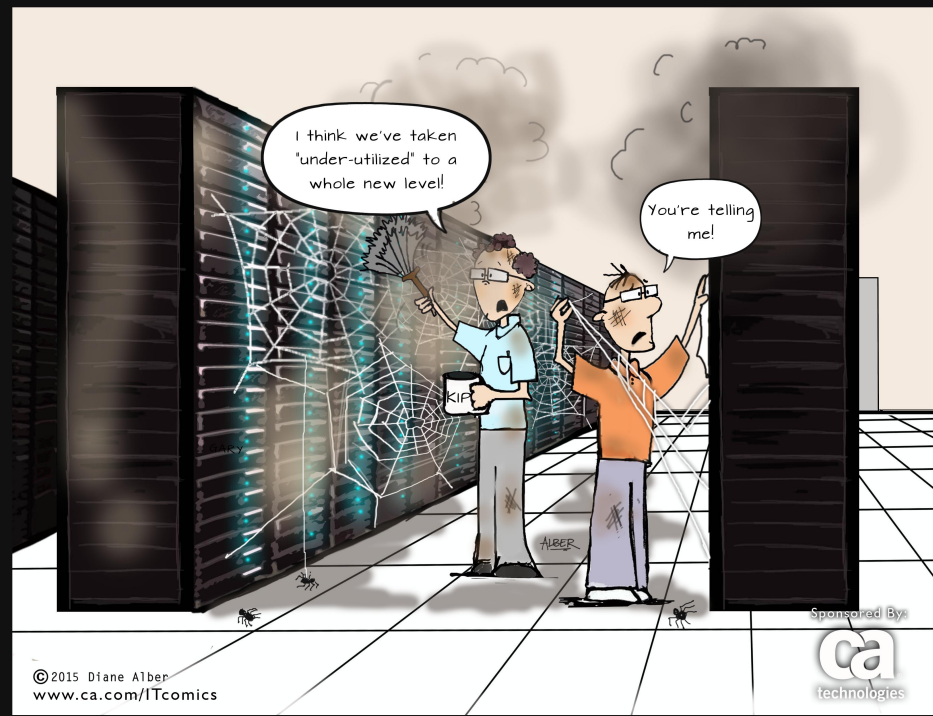
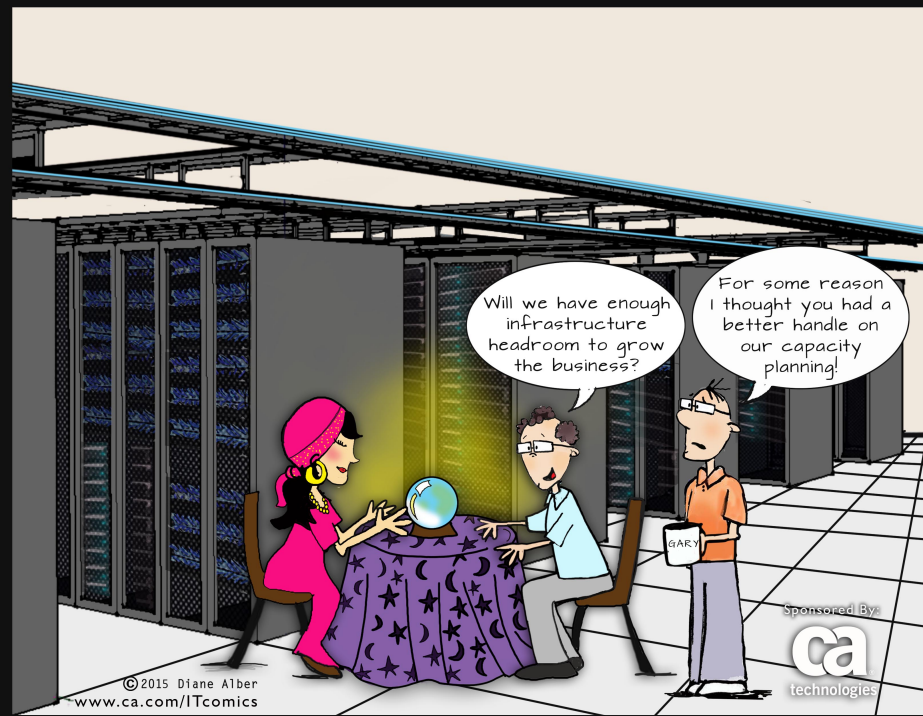
Cloud

“The enormous number of devices, coupled with the sheer volume, velocity and structure of IoT data, creates challenges...managers need to **deploy more forward-looking capacity management** in these areas to be able to **proactively** meet the business priorities associated with IoT.” [REF08]

Poll Question #2

Does your organization have separate capacity planning groups – application & infrastructure?

- a) Yes
- b) No



ca.com/itcomics – Vote for your favorite!!!

Recent IT Blunders



Sources: [REF09], [REF10] & [REF11]

Something has to change!!

The app must succeed on the first try

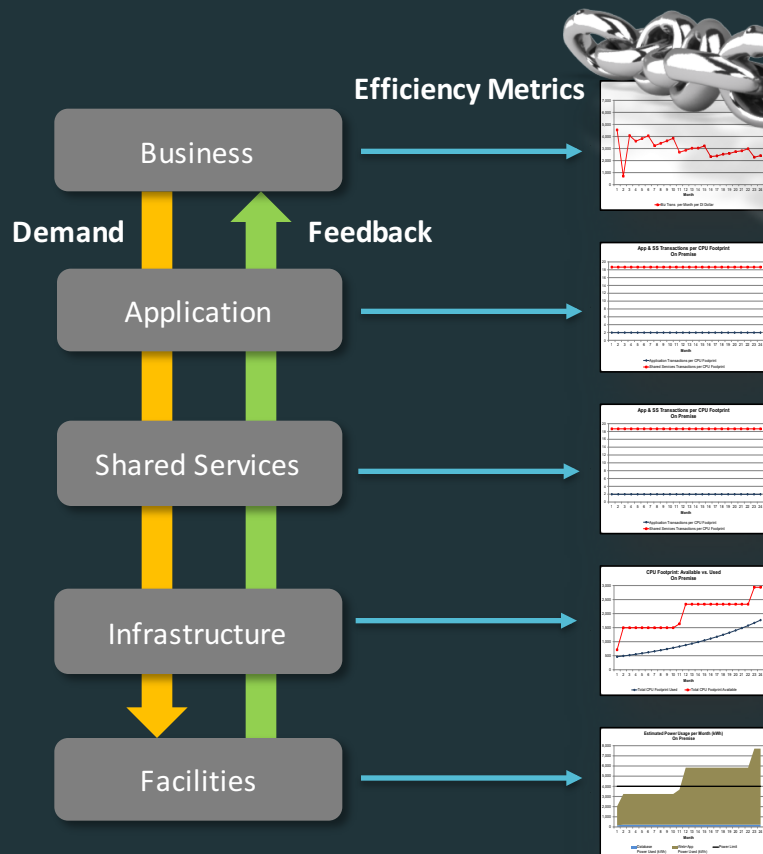


BUSINESS

INFRASTRUCTURE

DATA CENTER

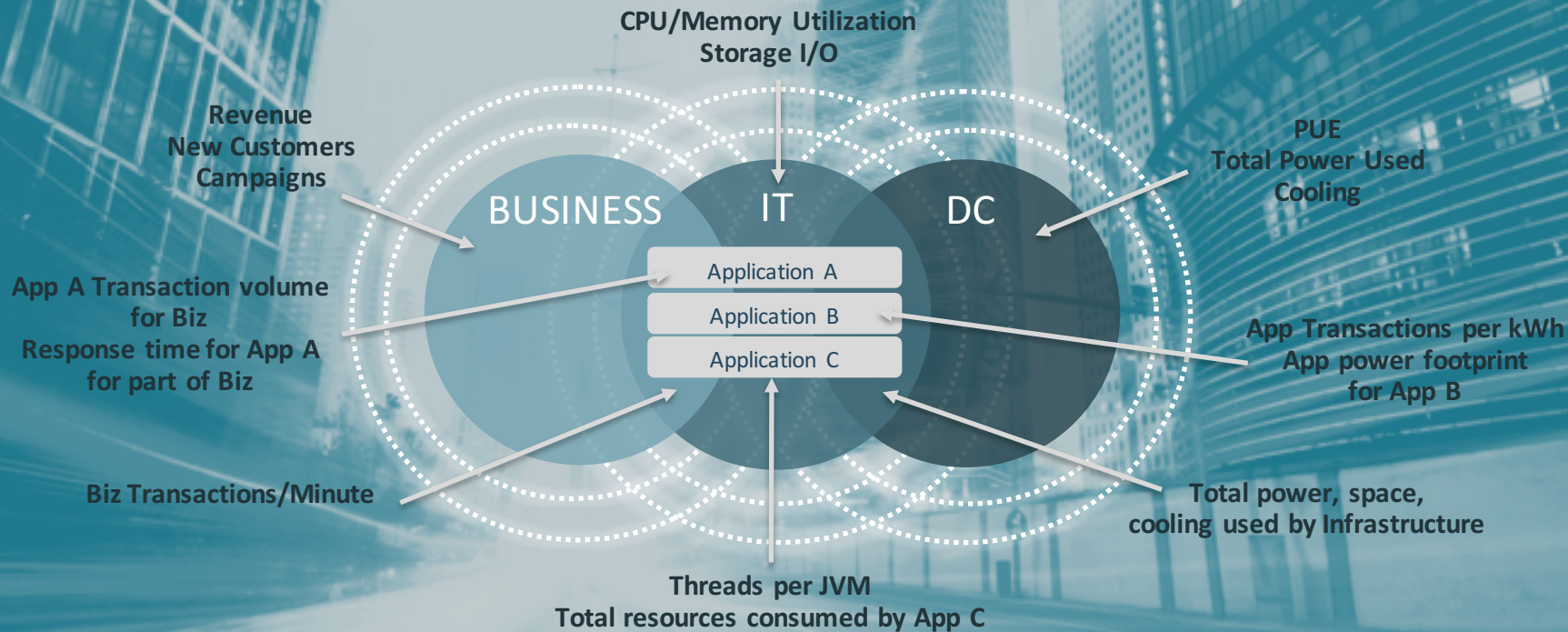
Ensure resiliency throughout the IT Supply Chain



The Capacity Planning Stack [REF12]

- Driven by business requirements
- End-to-end view across the Digital Infrastructure
- Efficiency metrics used as “measures of success”
- Conceptually transparent and straightforward
- Cost allocation across all components of the Digital Infrastructure

We have the data...it's what we do with it



Source: [REF13]

A good start to a resilient IT supply chain

BUSINESS

VMware Virtual Appliance Marketplace

Find, download and test drive pre-packaged applications.

Marketplace Home

Search here

Content Filters

Reset Filters

- ☐ Industry Type >
- ☐ Technology Type >
- ☐ Supported OS >
- ☐ vCloud Air Certifications >
- ☐ Documents >
- ☐ Countries >
- ☐ VMware Ready >

Can't find what you're looking for?

Contact Us

Solutions (2075)



12.04 LTS JeOS Ubuntu

This appliance is built with debootstrap instead of a default Server install and then optimized for appliance use as described at <http://bitdataappliances.eu>

Individual Contributor
★★★★★ 2



2X ApplicationServer XG

2X ApplicationServer XG combines the best in application delivery and virtual desktop (VDI) management by allowing administrators to publish

2X Software
★★★★★ 1



Acano VM Server

Acano unites previously incompatible audio, video and web technologies in coSpaces — virtual meeting rooms, only radically better. With coSpaces, remote work

Acano (UK) Ltd
★★★★★ 0



1st Easy Cloud Utilities - VMware Virtual Data

Cloud Utilities provides

1st Easy Cloud
★★★★★ 0



[V

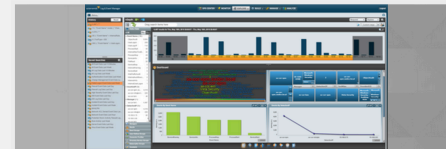
Flex
ope
shc
ant
Flex
on

vplanet
★★★★★ 0



Accellion

Accellion
★★★★★ 0



VSX Home / Virtual Appliances

Marketplace Home

SolarWinds Log & Event Manager

★★★★★ 0

Overview Tech Specs Support Reviews

Tech Specs

CPU: Dual processor, 3GHz

Memory: 8 GB

Hard Drive: 250 GB

Virtual Environment for Deployment: VMware ESX/ESXi 4.0+, Hyper-V Server 2008 R2/2012

Overview

SolarWinds Log & Event Manager (LEM) is a full-functional security management (SIEM) solution that enhances IT security by monitoring logs from thousands of network devices, security appliances, VMware ESX hosts, and enterprise workstations. LEM performs real-time, in-memory, multiple event correlation to analyze device and machine logs, and provides advanced incident awareness.

SolarWinds LEM can detect, alert, and react to zero-day threats and help protect your network and systems from security risks. LEM is your one-stop solution for log management and enhanced IT security!

Publisher: SolarWinds

Reviews 0

Share

Facebook Twitter LinkedIn

Like 0

Report Issue

technologies

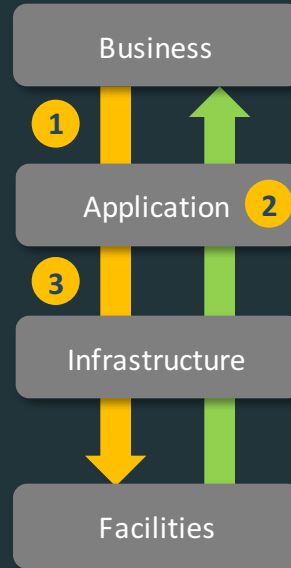
A more detailed example based on the Stack

1 Business Demand

- Current business transaction volume
- Projected new business transaction volume

3 Infrastructure Capacity Planners

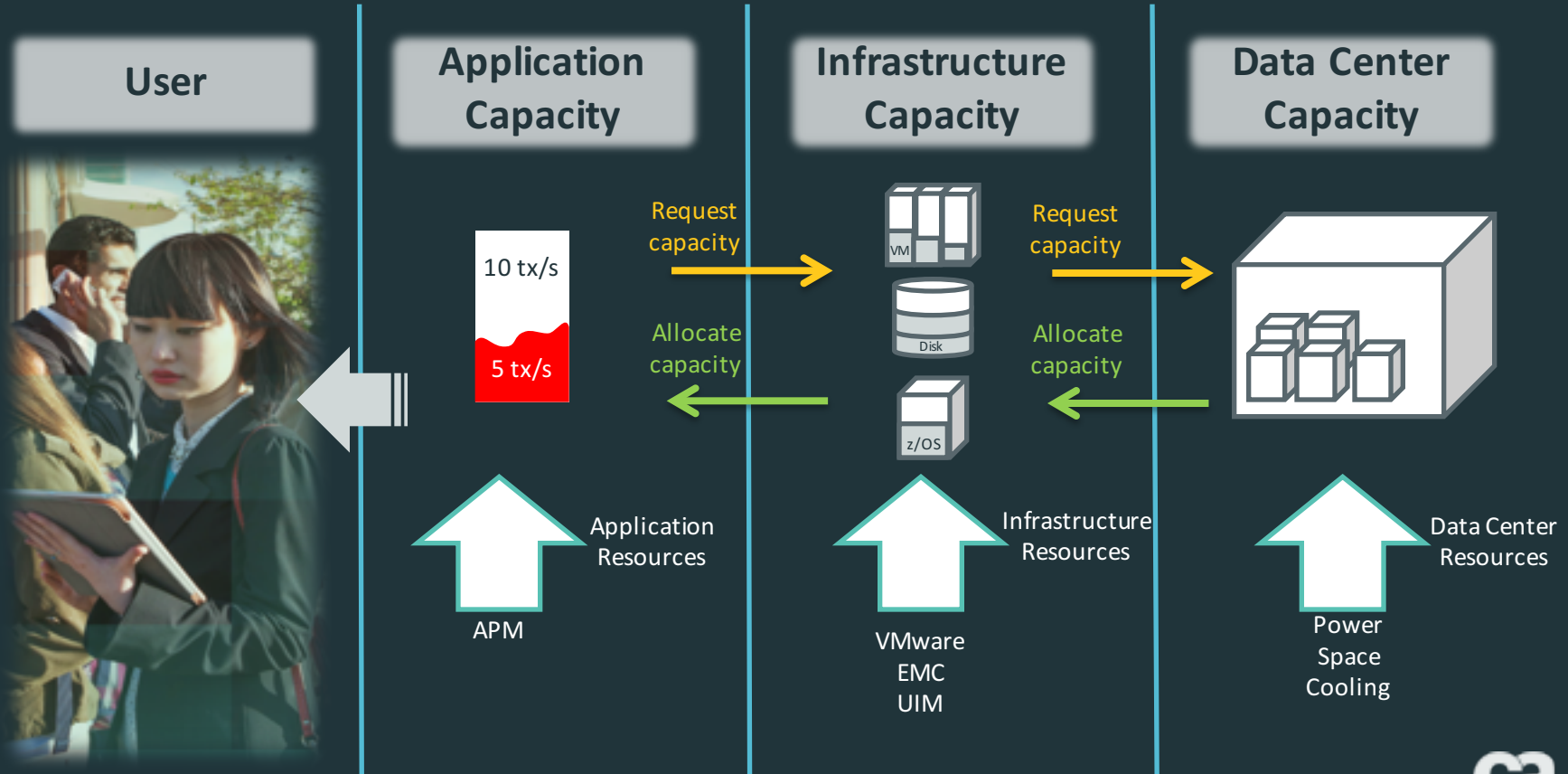
- Instance count
- Application transaction volume
- IT resources



Application Capacity Planners 2

- Translate
 - Current application transaction volume
 - Projected new application transaction volume
- Estimate new IT resource demand based on current application profile
 - Instances
 - CPU
 - Memory
 - I/O
 - Network

A resilient IT supply chain model servicing the App Economy



Poll Question #3

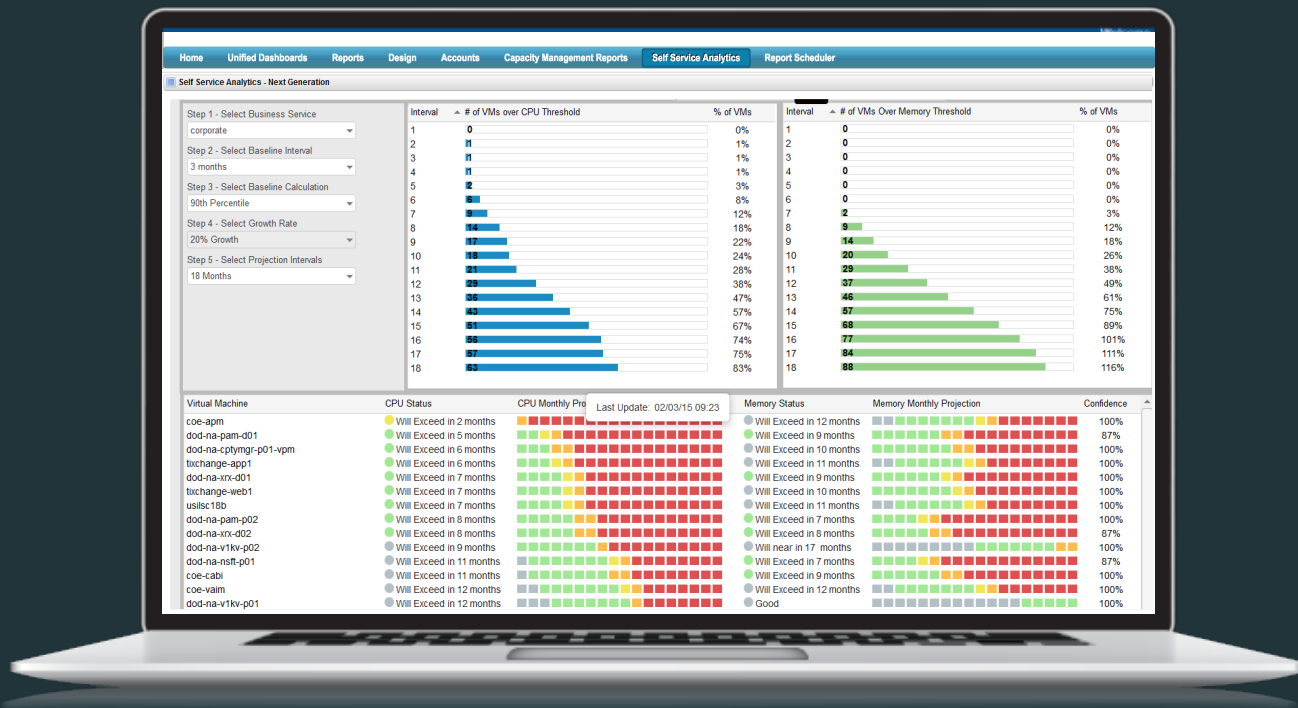
How closely does your capacity planning group work with the data center (facilities) planners?

- a) No communication
- b) Some communication
- c) Work very closely

The Application-Centric Dashboard



The Application-Centric Dashboard



Each link in the IT supply chain is crucial
...and depends on the link before



So a healthy, resilient, cost-effective IT supply chain management starts with the application.



welcome
to the

Application Economy



\$153B

Public cloud services market expected to grow 17.8% in 2014 to \$153 billion¹

Sources: [REF14], [REF15] & [REF16]

268B

By 2017, mobile apps will be downloaded more than 268 billion times³

50%

By 2018, more than 50% of B2B collaboration will take place through Web APIs²

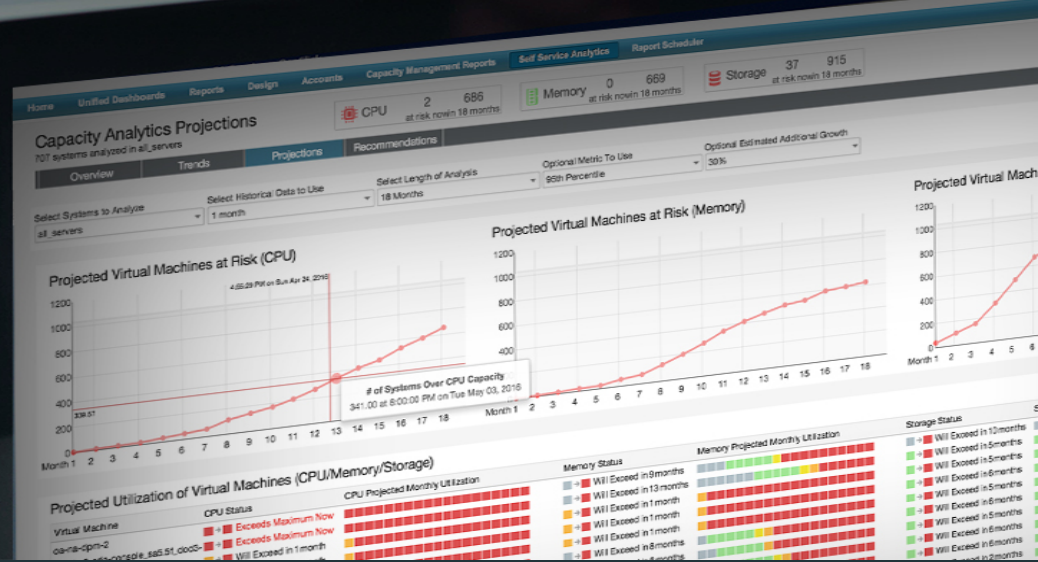
Poll Question #4

What is your biggest challenge to support application capacity planning?

- a) The business owners do not work with us
- b) We do not have time to look at all of our applications
- c) The infrastructure team does not give us the planning data we need
- d) All capacity planning work is out-sourced

Register for a live solution demo and Q&A session this Wednesday, June 3, 2015

- Register here: <http://cainc.to/PhpGbT> (case sensitive)
- Or register via the webcast email invite





41ST INTERNATIONAL
**PERFORMANCE
& CAPACITY**
CONFERENCE



NOVEMBER 2-5, 2015
THE ST. ANTHONY HOTEL
San Antonio, TX

Join us in San Antonio for the 2015 CMG
Conference!

Save the dates:

November 2nd to 5th at The St. Anthony in downtown San Antonio

*****3 blocks to both the Alamo and the Riverwalk*****



Questions?



Thank you

References

- REF01 - "The Application Economy", Marco Comastri, CA Technologies, January 2015,
http://www.huffingtonpost.com/marco-comastri/the-application-economy_b_6526530.html
- REF02 - "Application economy to fuel customer relationships: CA Technologies", Mike Gregoire, CA Technologies, CA World 2014,
<http://www.zdnet.com/article/application-economy-to-fuel-customer-relationships-ca-technologies/>
- REF03 - "How Smart Connected Products Are Transforming Competition." M. Porter, J. Heppelmann, Harvard Business Review, November 2014
- REF04 - "Forecast: The Internet of Things, Worldwide, 2013", Peter Middleton, Peter Kjeldsen & Jim Tully, Gartner ID: G00259115, November 2013
- REF05 - "Reaching the Top of the Web Performance Mountain", Jim Rapoza, Aberdeen Group, May 2013
- REF06 - "Are you a rarity? Only 16 percent of people will try out an app more than twice", Joshua Pramis, Digital Trends, March 2013
- REF07 - "NASDAQ longest downtime adds to woes over glitches in electronic trading, RT.com, August 2013
- REF08 - "The Impact of the Internet of Things on Data Centers", Fabrizio Biscotti, Joe Skorupa, et al., Gartner ID: G00250562, February 2014
- REF09 - "Obamacare Window Shoppers Meet Bottleneck in Slow Sign-Up", Drew Armstrong, Alex Nussbaum & Shannon Pettypiece, October 2013,
<http://www.bloomberg.com/news/articles/2013-10-04/obamacare-window-shoppers-meet-bottleneck-in-slow-sign-up>
- REF10 - "SimCity EU servers suffer intermittent outages",
<http://www.computerandvideogames.com/395022/update-simcity-eu-servers-suffer-intermittent-outages/>
- REF11 - "Best Buy's website suffers Black Friday outage", Krystina Gustafson, November 2014,
<http://www.cnn.com/id/102223815>
- REF12 - "Capacity Planning: A Revolutionary Approach for Tomorrow's Digital Infrastructure", Amy Spellmann & Richard Gimarc, CMG 2013, November 2013
- REF13 - "Stack Metrics: A Taxonomy of Metrics Supporting the Capacity Planning Stack", Richard Gimarc, Amy Spellmann & Adrian Johnson, CMG 2014, November 2014
- REF14 - Gartner Forecast: Public Cloud Services, Worldwide, 2012-2018, 3Q14 Update, Ed Anderson, et al, September 2014
- REF15 - Gartner Press Release, "Gartner Says by 2017, Mobile Users Will Provide Personalized Data Streams to More Than 100 Apps and Services Every Day", January 2014,
<http://www.gartner.com/newsroom/id/2654115>
- REF16 - "Why Is Software Eating The World", Wall Street Journal, August 2011